

Digital Photographic Printers
PICTOGRAPHY
4500/3500



Versatile digital printers offering long-lasting,
genuine photo-quality prints in a wide variety of sizes

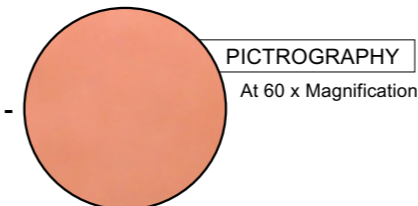


Digital photo printing on demand is here

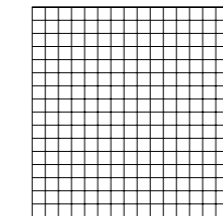
Fujifilm's Pictography 4500 and 3500 offer on-demand digital photo printing in a compact and surprisingly affordable form. Thanks to the advanced "Laser Exposure-Thermal Development Dye-Transfer Process" and newly-developed paper, Pictography delivers ultra-high quality photos. Now you can make photo-quality prints from your digital camera-or any other digital source – up to Double letter wide/A3 wide(Pictography 4500) at little more than the touch of a button.

The difference is plain to see

Although Pictography has a nominal resolution of 400dpi, the "Laser Exposure-Thermal Development-Dye-Transfer Process" produces continuous gradation as in a photographic print. What's more, each dot has 256 gradations of cyan, yellow or magenta resulting in smooth, natural color gradation from brilliant highlights to deep shadow.



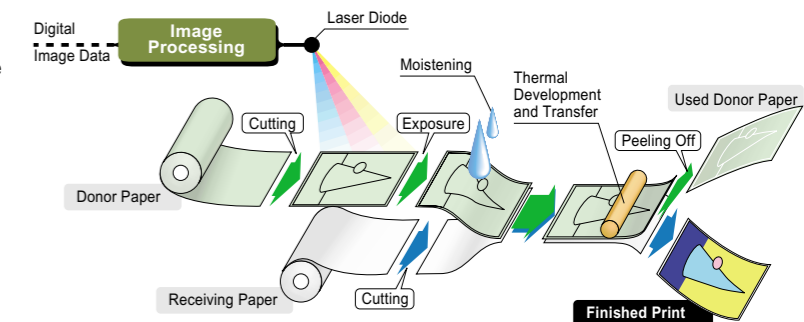
1x1mm (16x16 Pixel) 400dpi



Each dot contains 256 gradations of cyan, yellow or magenta for total of about 17,600,000 colors.

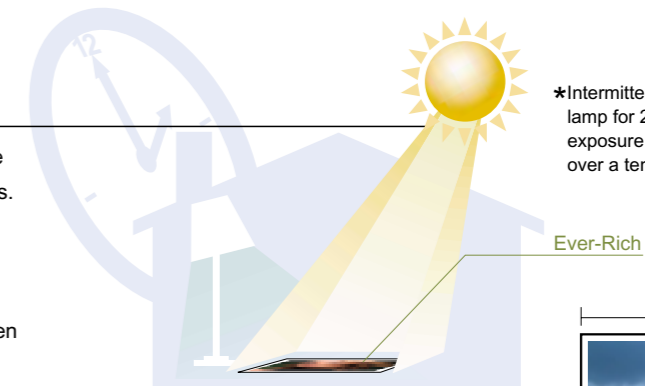
Unique Printing Process

Photosensitive donor paper is first exposed by a laser diode. The donor paper is then moistened, and the dye image is transferred to the receiving paper with a combination of heat and pressure. Finally the receiving paper, complete with image, is peeled off. Since the entire system uses just a single pass for both laser diode exposures and yellow/magenta/cyan thermal development and dye transfer, the output is sharp with no color bleed or blurring.



Long-lasting Ever-Rich paper for ultra fade-resistance

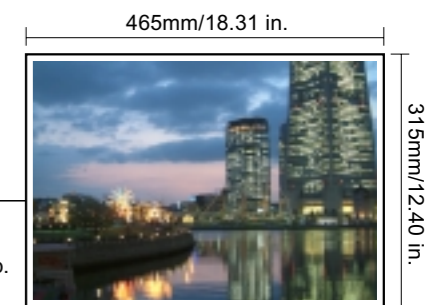
New Pictro-Paper Ever-Rich offers the same fade-resistance as conventional photographs. Not only is it resistant to indoor light, new ultraviolet resistant layer protects against to sunlight, too. Accelerated aging tests show Ever-Rich maintains its beautiful colors for ten years or more.*



*Intermittent exposure to an 85k Lux Xenon lamp for 266 hours is equivalent to exposure to 500 Lux for 12 hours a day over a ten-year period.

Wide range of paper sizes

With paper sizes ranging up to Double letter wide/A3 wide (Pictography 4500) or Letter/A4 (Pictography 3500) you have the power and versatility to handle almost any job. You can also handle the smaller sizes, too.

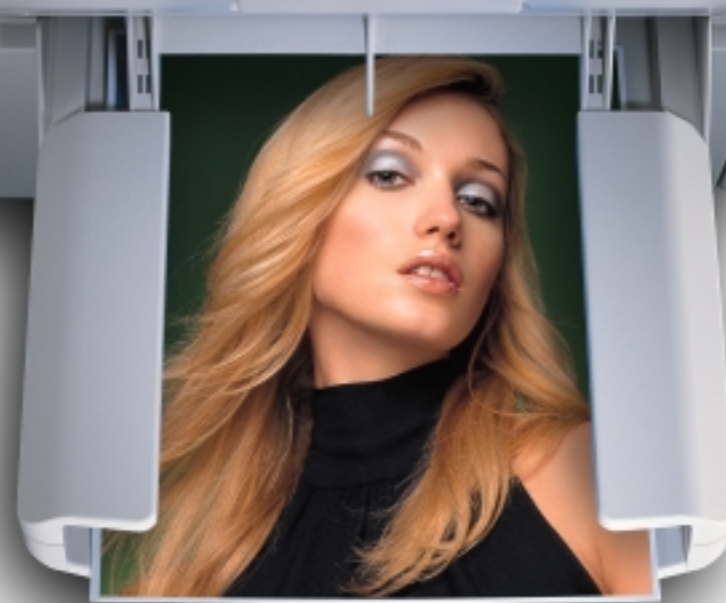


*Max. size for the Pictography 4500



High speed and easy operation

Your first A3 print takes approximately 90 seconds, with subsequent prints requiring only 58 seconds. All operations are easy and intuitive, and loading donor and receiving paper is fast and simple too.



High-quality prints, intuitive operation

Like its big brother, Pictography 3500 offers high-quality printing for photorealistic prints. Easy-to-use LCD panel and clean system (without ink cartridge or chemical) provide a comfortable work environment.

NEW PICTOGRAPHY 4500

Up to double-letter size print capacity for total versatility

Postcard(4x6) → Double letter wide/A3 wide

Paper is available in a wide variety of sizes from postcard (4x6) to double letter wide/A3 wide, offering the ultimate in versatility and ease of handling. Better still, the printer even outputs wide sizes so you can print registration marks for color DTP or pre-press artwork.

102mm/4.0inch Width

4x6 (4R)	4x7 (4HV)	4x10 (4P)
150mm	178mm	254mm

127mm/5.0inch Width

5x7 (5R)	5x9 (5HV)	5x14 (5P)
178mm	226mm	353mm

254mm/10.0inch Width

10x6	10x8	10x12	10x15
152mm	203mm	305mm	385mm

279mm/11.0inch Width

Letter	Double Letter
216mm	432mm

297mm/11.7inch Width

A4	A3
210mm	420mm

315mm/12.4inch Width

A4 Wide/ Letter Wide	12x18
255mm	457mm
A3 Wide/ Double Letter Wide	
465mm	



PICTOGRAPHY 3500

High quality, high performance in a compact size

Half letter/Letter, A4/A5 & Special

Like the Pictography 4500, all paper sizes, have gloss or matte paper types at standard thickness and lightweight types.

210mm/8.3inch Width

A5	A4
148.5mm	297mm
(border are also available)	

224mm/8.8inch Width

Half-Special	Special
156.5mm	305mm

216mm/8.5inch Width

Half-Letter	Letter
139.5mm	279mm



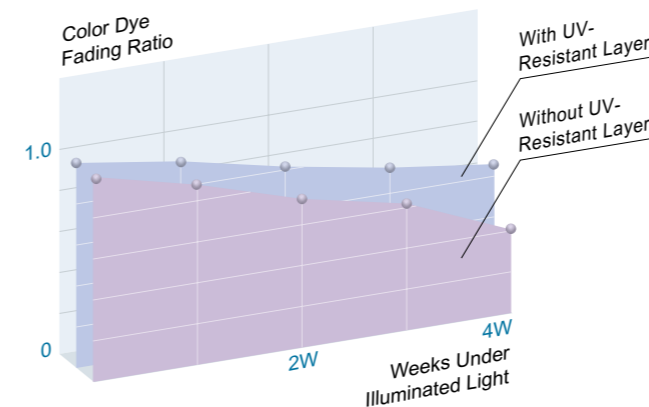
Long-lasting quality and flexible system solutions.

New Ever-Rich Pictro-Paper gives you the high-quality and long-lasting prints.

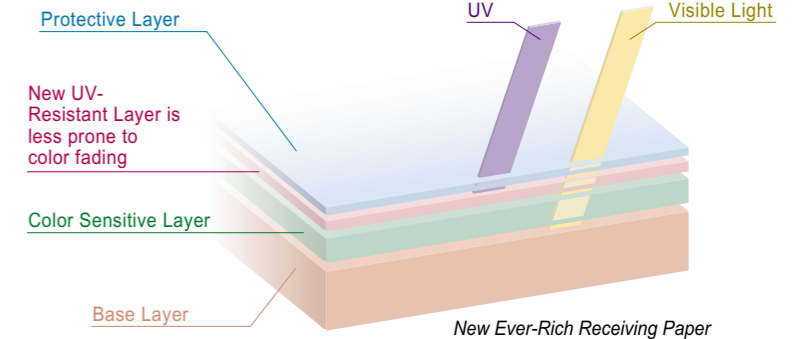
PICTROPRINT *EVER-RICH*

The secret of long life

New Ever-Rich Pictro-Paper not only gives you the same quality as conventional photographic paper, it also gives you almost the same resistance to fading. The secret is a unique Paper structure that protects against visible light and ultraviolet light. The paper has a newly added anti-fading agent in the diffusion transfer material and UV-resistant layer that protects the photo from color image fading against UV rays.



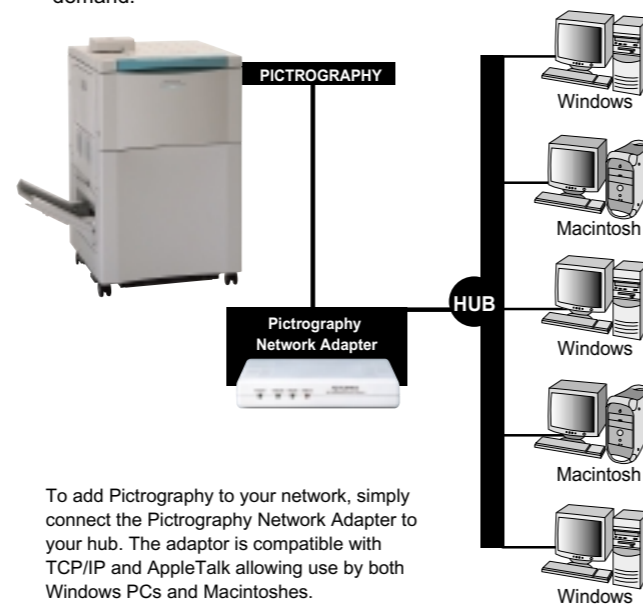
New Ever-Rich Receiver Layer Structure



Easy connectivity increases efficiency and simple operation raises productivity.

So many ways to connect

Pictography offers you so many ways to connect to your Macintosh or Windows PC. Simplest is a direct connection from a single MAC/PC via SCSI. For a larger system, there's an optional Pictography Network Adapter. Or you can dedicate a printer server as part of your LAN. Whichever method you choose, you'll enjoy high speed, high quality photo printing on demand.



To add Pictography to your network, simply connect the Pictography Network Adapter to your hub. The adaptor is compatible with TCP/IP and AppleTalk allowing use by both Windows PCs and Macintoshes.

PICTOGRAPHY NETWORK ADAPTER MAIN SPECIFICATIONS

Connection	10BASE-T/100BASE-TX auto-negotiation
Protocol	TCP/IP, Apple Talk
System Support	Windows 95/98/2000/NT (version 4.0)/XP, Mac OS 8.1/8.6/9/9.2.2
Dimensions	230(W) x 165(D) x 40(H)mm (9 x 7 x 2 in.)
Power Source	AC120V, 60Hz 220-240V AC, 50/60Hz

Bundled software

Printer drivers for the Power Macintosh and Windows 95/98/2000/NT (ver 4.0)/XP are included, allowing you to print without worrying about your platform or application software.*

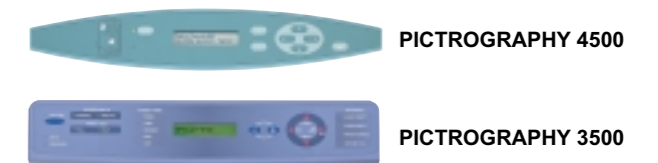
*Major software application packages with confirmed compatibility include: Adobe Photoshop, MS Word, MS Excel, MS Power Point, Quark XPress, Adobe PageMaker, Adobe Illustrator, Internet Explorer and Netscape Communicator.



"Image Intelligence" is a set of sophisticated digital image-processing software technologies that are incorporated in the Pictography. This software will analyze the subject and shooting conditions and, based on Fujifilm's long experience in the image-processing field, create the best possible result reflecting the photographer's emotion and intention to the scene.

Designed for easy operation

The comprehensive LCD panel gives intuitive, independent control of margins, brightness, color balance and other operating parameters. Information on donor and receiving paper as well as out-of-paper messages are also displayed. Thanks to the easy-to-read, informative display, no specialized knowledge is required to operate Pictography.



Auto color calibration

A compact, built-in color calibrator automatically reads measurement patterns to create the consistent color environment necessary for high-quality output. Fast and convenient, the color calibrator makes it possible to maintain color consistency over time or between print jobs.



Clean processing, friendly to the environment

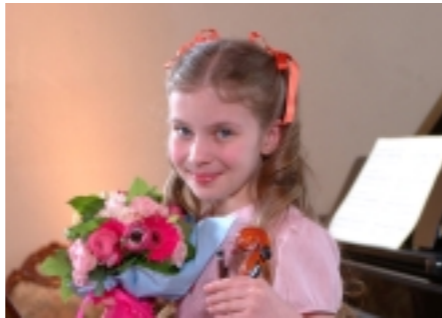
Pictography's "Laser Exposure-Thermal Development-Dye-Transfer Process" requires only water and heat for developing and printing. And this means there are no messy chemicals to dispose of, making the entire system extremely eco-friendly.



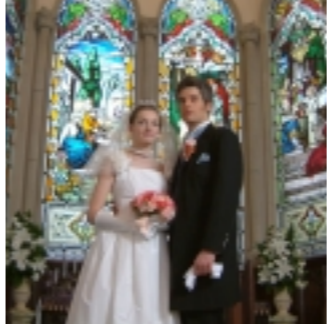
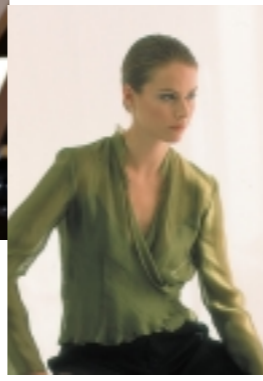
No matter what your application, you'll find Pictography has the answer



Photographic Industry

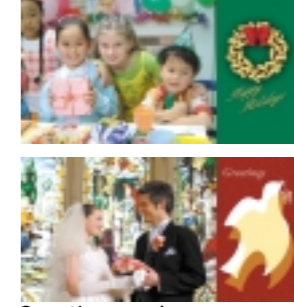
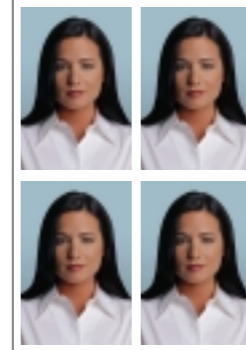


Portraits

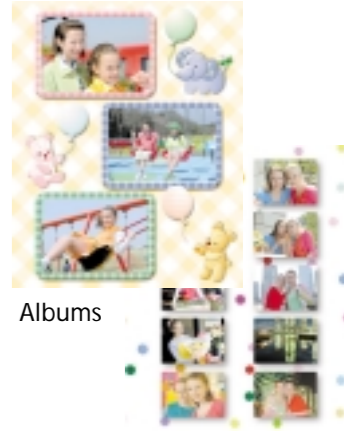


Wedding photos

ID photos



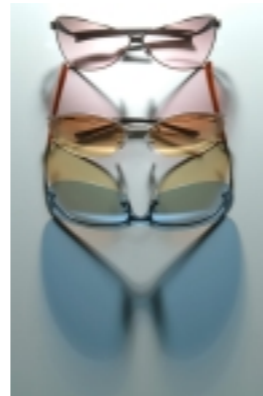
Greeting cards



Albums



Journalistic photos



Commercial photos

System Expansion

Digital Photo Center for your core system

The combination of Pictography and the Digital Photo Center (in-store print ordering terminal) is the ideal solution for photo shops without the budget or space for a full digital minilab system. Customers can make prints from digital camera, digital media, or print for themselves and immediately receive beautiful prints all on the spot. What's more, Pictography integrates superbly into an existing photofinishing operation, allowing you to offer photo prints in sizes up to letter/A4, or print-to-print services with a flatbed scanner.



Professional application



Computer graphic images

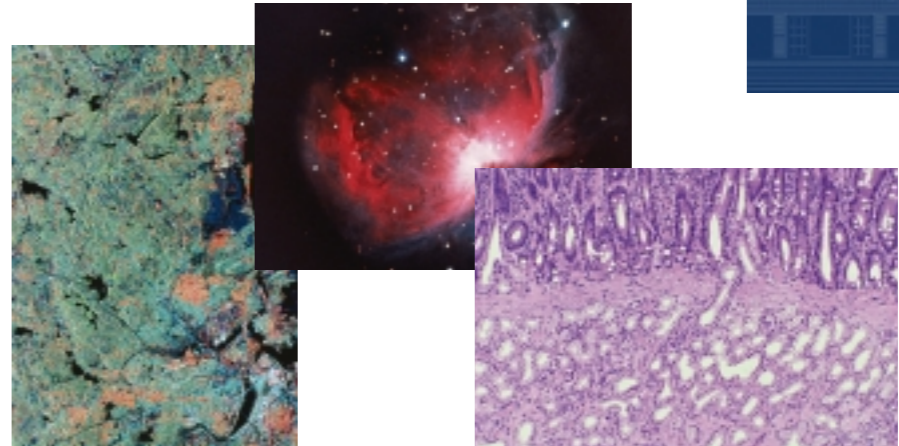
Color DTP, Pre-press and graphic designs



Industrial designs



Medical / educational presentations



Architectural presentations



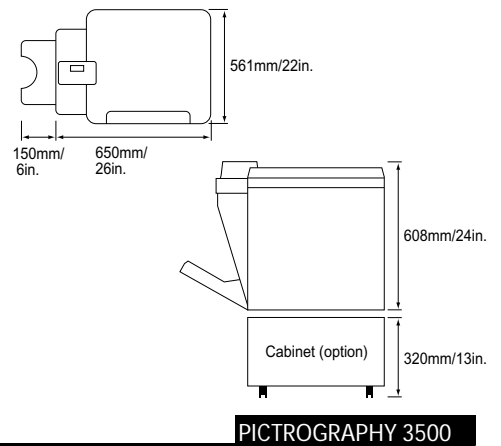
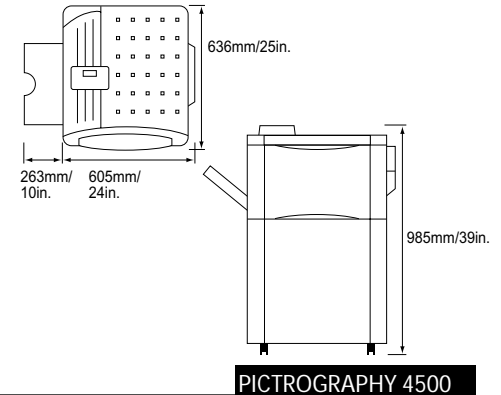
As digital printing requirements grow more sophisticated and more diverse, the Pictography is ready to adapt to any dynamic environment, providing solutions for a wide range of applications. From photographic applications to professional applications, the Pictography has the answer.

PICTROGRAPHY 4500/3500 MAIN SPECIFICATIONS

	PICTROGRAPHY 4500	PICTROGRAPHY 3500
Printing Process	Silver halide photographic process combined with LD exposure and Thermal Development and Dye Transfer	Silver halide photographic process combined with LD exposure and Thermal Development and Dye Transfer
Colors	256 density levels each for Y, M and C; total of 16.7 million color shades	256 density levels each for Y, M and C; total of 16.7 millions color shades
Resolution	400, 267dpi	400, 320, 267dpi
Frame Memory	120MB	48MB
Printing Time	A3: 93 sec. / first print, 58 sec. / subsequent print in continuous operation A4: 84 sec. / first print, 51 sec. / subsequent print in continuous operation	A4: 120 sec. / first print, 70 sec. / subsequent print in continuous operation
Image Adjustment	Calibration: Built-in auto calibrator. Color Control: Brightness, Contrast, RGB Color Balance, LUT gradation control, Color Matching	Calibration: Built-in auto calibrator. Color Control: Brightness, Contrast, RGB Color Balance, LUT gradation control, Color Matching
Interface	SCSI-2 (D-SUB Half-pitch 50PIN) Transfer speed: About 3.7 MB/S	SCSI-2 (D-SUB Half-pitch 50PIN) Transfer speed: About 3.7 MB/S
Bundled Software	Printer Driver for PowerMacintosh, Windows 95/98/2000/NT (version 4.0) Photoshop Plug-In module for PowerMacintosh, Windows 95/98/2000/NT (version 4.0)	Printer Driver for PowerMacintosh, Windows 95/98/2000/NT (version 4.0) Photoshop Plug-In module for PowerMacintosh, Windows 95/98/2000/NT (version 4.0)
Power Source	AC 100~120V, 60Hz or 220~240V AC 50/60Hz	AC 100~120V, 60Hz or 220~240V AC 50/60Hz
Maximum Current Consumption	Max. 1.2KVA	Max. 1.2KVA
Dimensions	605(W) x 636(D) x 985(H)mm (24 x 25 x 39 in.)	650(W) x 561(D) x 608(H)mm (26 x 22 x 24 in.)
Weight	Approx. 110Kg (Approx. 242.5lbs)	Approx. 70Kg (Approx. 154.2lbs)

SUPPLIES

PICTROGRAPHY 4500	Paper Type		cm x m	in. x ft.	Capacity (sheets per roll)		
	Donor Paper		32.3x92	12.7x302	A3 Wide/Double Letter Wide: 197 sheets		
		30.5x92	12x302	A3: 199 sheets, Double Letter: 194 sheets			
		26.2x92	10.3x302	8x10: 453 sheets, 10x12: 301 sheets			
		13.5x92	5.3x302	4x6(4R): 613 sheets, 5x7(5R): 516 sheets			
PICTROGRAPHY 4500	Receiving Paper	Standard thickness/	31.5x60	12.4x197	A3 Wide/Double Letter Wide: 129 sheets		
			Glossy	29.7x60	—	A3: 142 sheets	
		27.9x60		11x197	Double Letter: 138 sheets		
		25.4x60		10x197	8x10: 295 sheets, 10x12: 196 sheets		
		12.7x60		5x197	5x7(5R): 337 sheets		
		10.2x60	4x197	4x6(4R): 400 sheets			
	Standard thickness/	Matte	31.5x60	12.4x197	A3 Wide/Double Letter Wide: 129 sheets		
			27.9x60	11x197	Double Letter: 138 sheets		
			25.4x60	10x197	8x10: 295 sheets, 10x12: 196 sheets		
			10.2x60	4x197	4x6(4R): 400 sheets		
	Lightweight/Glossy		29.7x77	—	A3: 183 sheets		
	Lightweight/Matte		10.2x77	4x253	4x6(4R): 513 sheets		
	PICTROGRAPHY 3500	Paper Type		cm x m	in. x ft.	Capacity (sheets per roll)	
		Donor Paper		22.4x50	8.8x164	A4: 156 sheets, Letter: 148 sheets	
PICTROGRAPHY 3500	Receiving Paper	Standard thickness/	22.4x31	8.8x101	Special: 101 sheets		
			Glossy	21.6x31	8.5x101	Letter: 111 sheets	
		21x31		—	A4: 104 sheets		
		Standard thickness/		Matte	22.4x31	8.8x101	Special: 101 sheets
					21.6x31	8.5x101	Letter: 111 sheets
			21x31		—	A4: 104 sheets	
	Lightweight/Glossy		Matte		22.4x40	8.8x131	Special: 131 sheets
		21.6x40		8.5x131	Letter: 143 sheets		
		21x40		—	A4: 134 sheets		
		Lightweight/Matte		Matte	22.4x40	8.8x131	Special: 131 sheets
	21.6x40		8.5x131		Letter: 143 sheets		
	21x40		—		A4: 134 sheets		
	21x40		—		A4: 134 sheets		



CLASS 1 LASER PRODUCT
LASER KLASSE 1
APPAREIL À LASER DE CLASSE 1
PRODUCTO LASER DE CLASE 1

EN60825-1:2001

- Appearance and specifications are subject to change without notice. • FUJIFILM and PICTROGRAPHY are registered trademarks of Fuji Photo Film Co., Ltd.
- Macintosh is a trademark of Apple Computer, Inc. • Adobe Photoshop is a registered trademark or a trademark of Adobe Systems Incorporated.
- Windows® is a registered trademark of Microsoft Corporation in the U.S. and other countries. • All other brand names or product names are trademarks or registered trademarks of their respective holders.



FUJI PHOTO FILM CO., LTD.

26-30, NISHIAZABU 2-CHOME, MINATO-KU, TOKYO 106-8620, JAPAN